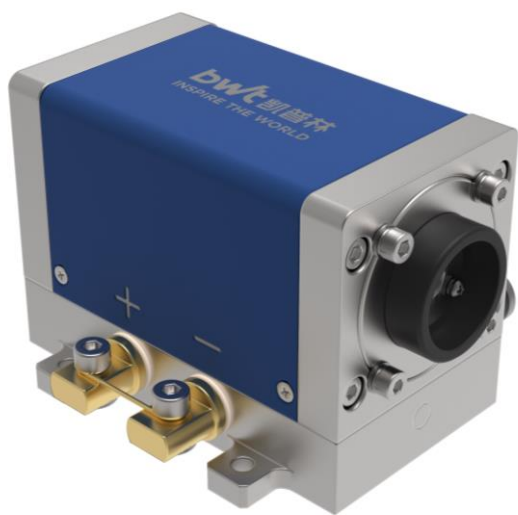


Water Cooled Diode-Pumped Solid State Laser

DPM-808C-5000Q-IS(5x5)



Features :

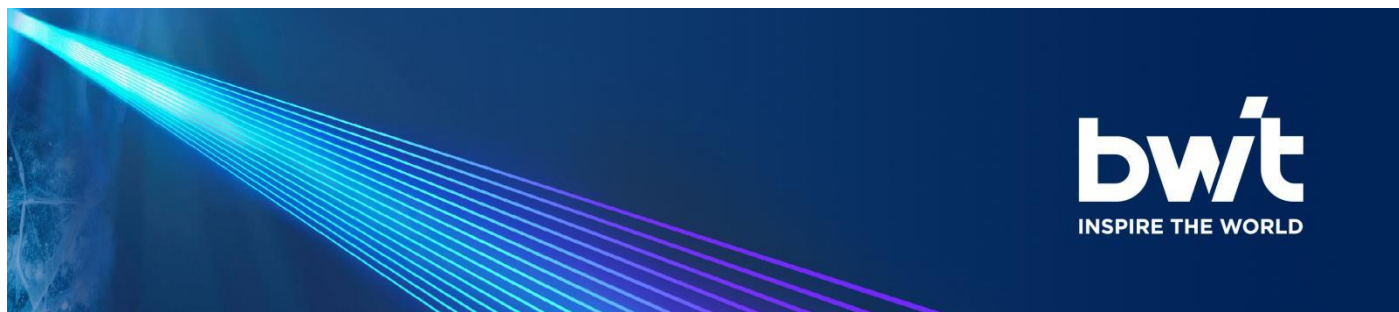
- ♦ High Peak Power
- ♦ High Reliability
- ♦ Compact Size

Applications :

- ♦ Pumping
- ♦ Medical
- ♦ Industrial Application
- ♦ Scientific Research

BWT, founded in 2003, is committed to the mission of "let the dream drive the light", the vision of becoming the "Global leader in laser solutions", and the value of "Outstanding innovation", providing diode laser, fiber laser, ultra-fast laser products and solutions to global customers.

The company pursues continuous innovation and insists on autonomous and controllable advanced process and technology. With Beijing headquarters as the core, BWT has successively established production and R&D centers in Jiangsu, and Shenzhen, and invested in the construction of an intelligent and digital production base in Tianjin. To build a high level of technical strength and product quality, BWT set up a German subsidiary in 2020, and taking a solid step for the internationalization of R&D, production and technological innovation.



Water Cooled Diode-Pumped Solid State Laser

DPM-808C-5000Q-IS(5x5)

Specifications		Unit	DPM-808C-5000Q-IS(5x5)		
			Min	Typical	Max
Optical parameters ⁽¹⁾	Center Wavelength	nm	806	808	810
	Spectral Width (FWHM)	nm	-	3	4
	QCW Output Power	W	-	5000	-
	Pulse Power per Bar	W	-	200	-
Electrical parameters	Pulse Width	us	-	200	-
	Frequency	Hz	-	400	-
	Duty Cycle	%	-	8	-
	Operating Current	A	-	175	200
	Typical Threshold Current	A	-	25	30
	Typical Operating Voltage	V	-	52	55
Basic parameter	Number of Bars	pcs	25		
	Recommended Crystal	/	Nd:YAG 0.6%		
	Angel	Deg.	-	-	-
	Crystal Diameter	mm	-	4	-
	Crystal Length	mm	-	83	-
	Pumping Length	mm	-	53	-
	rod face	/	-		
	Orientation	/	-		
Other parameters	Operating Temperature	°C	25		
	Storage Temperature	°C	0~55		
	Water Pressure	MPa	< 0.5		
	Water Flow Rate	LPM	≥9		

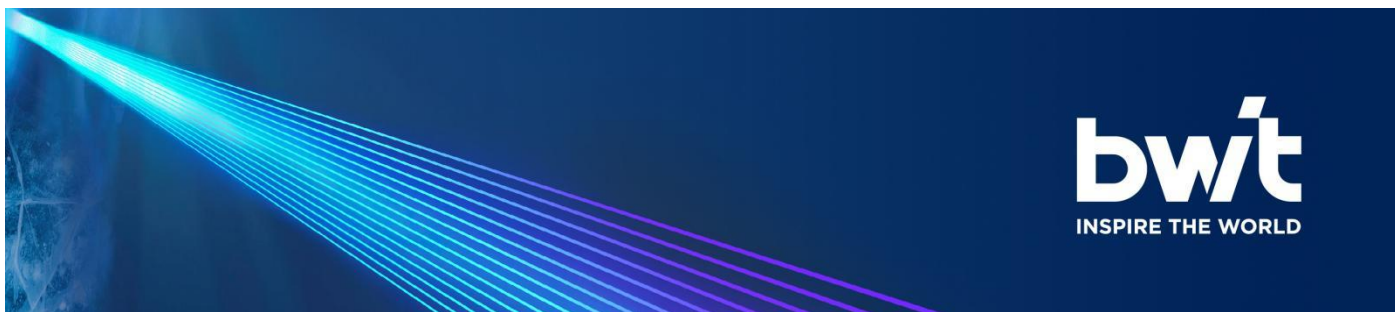
(1) Data measured under operation at nominal output power @25°C.

(2) A non-condensing environment is required for operation and storage.

(3) Operating temperature defined by the package case.

(4) The data above are for reference only. For specific data, please refer to the delivery package data.

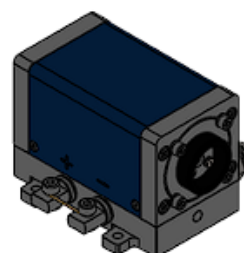
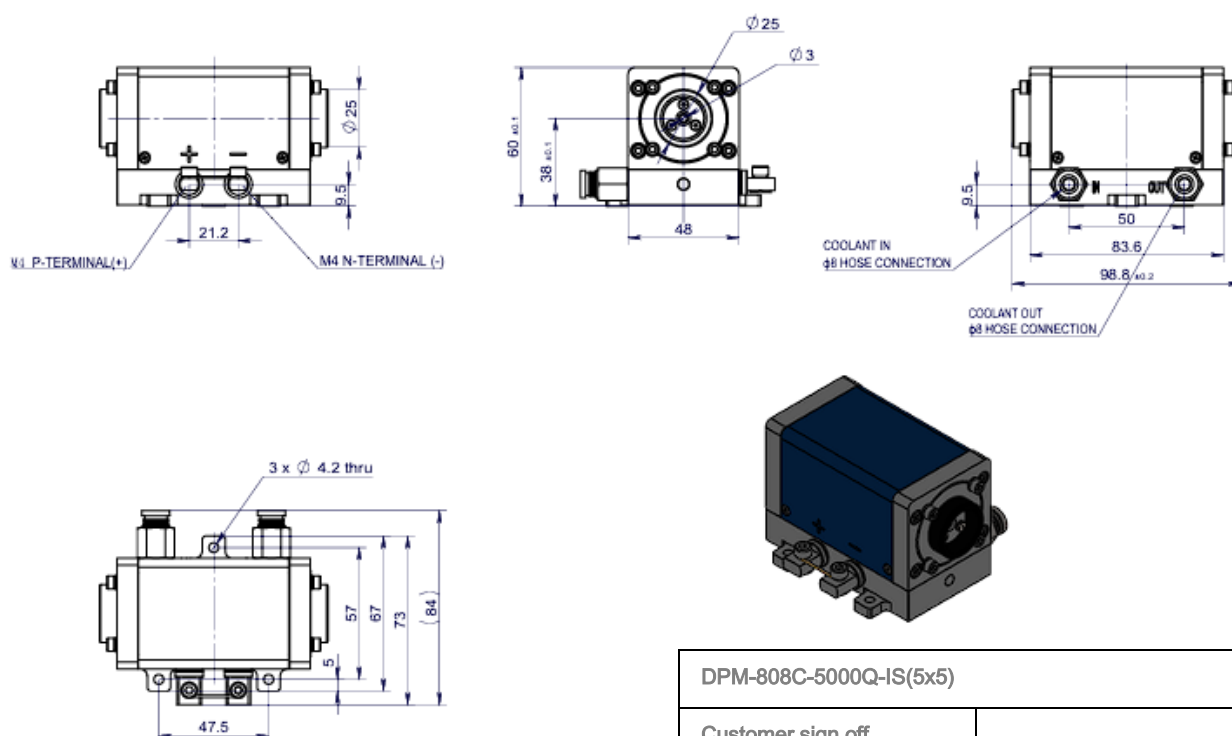
(5) Other wavelengths and configurations on customer request.



Water Cooled Diode-Pumped Solid State Laser

DPM-808C-5000Q-IS(5x5)

Package Dimensions (mm)



DPM-808C-5000Q-IS(5x5)

Customer sign off

Sign off time

OPERATING NOTES :

- ◆ Avoid eye and skin exposure to direct radiation during operation.
- ◆ ESD precautions must be taken during storage, transportation and operation.
- ◆ Short-circuit is required between pins during storage and transportation.
- ◆ Laser diode must work with good cooling.
- ◆ Operation temperature ranges from 25°C .



Declaration: information and specifications contained herein are deemed to be reliable and accurate.

BWT Beijing reserves the right to change, alter or modify the design and specifications of these products at any time without notice.